

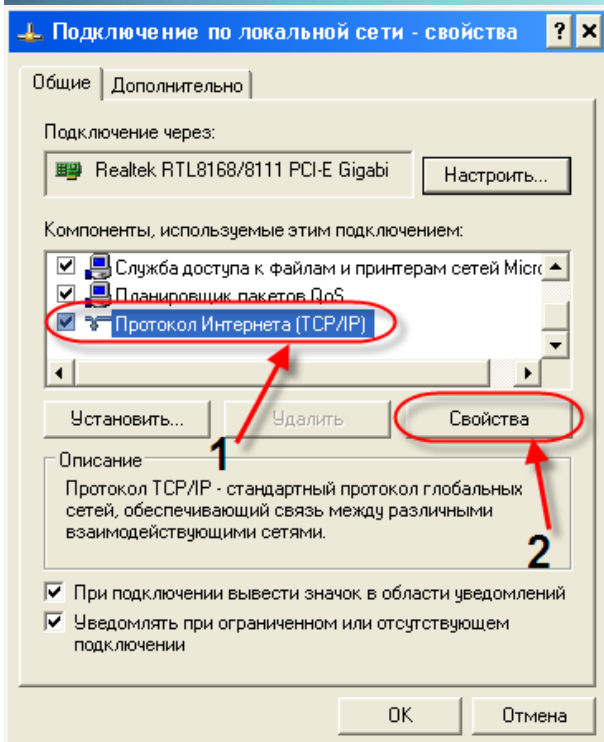
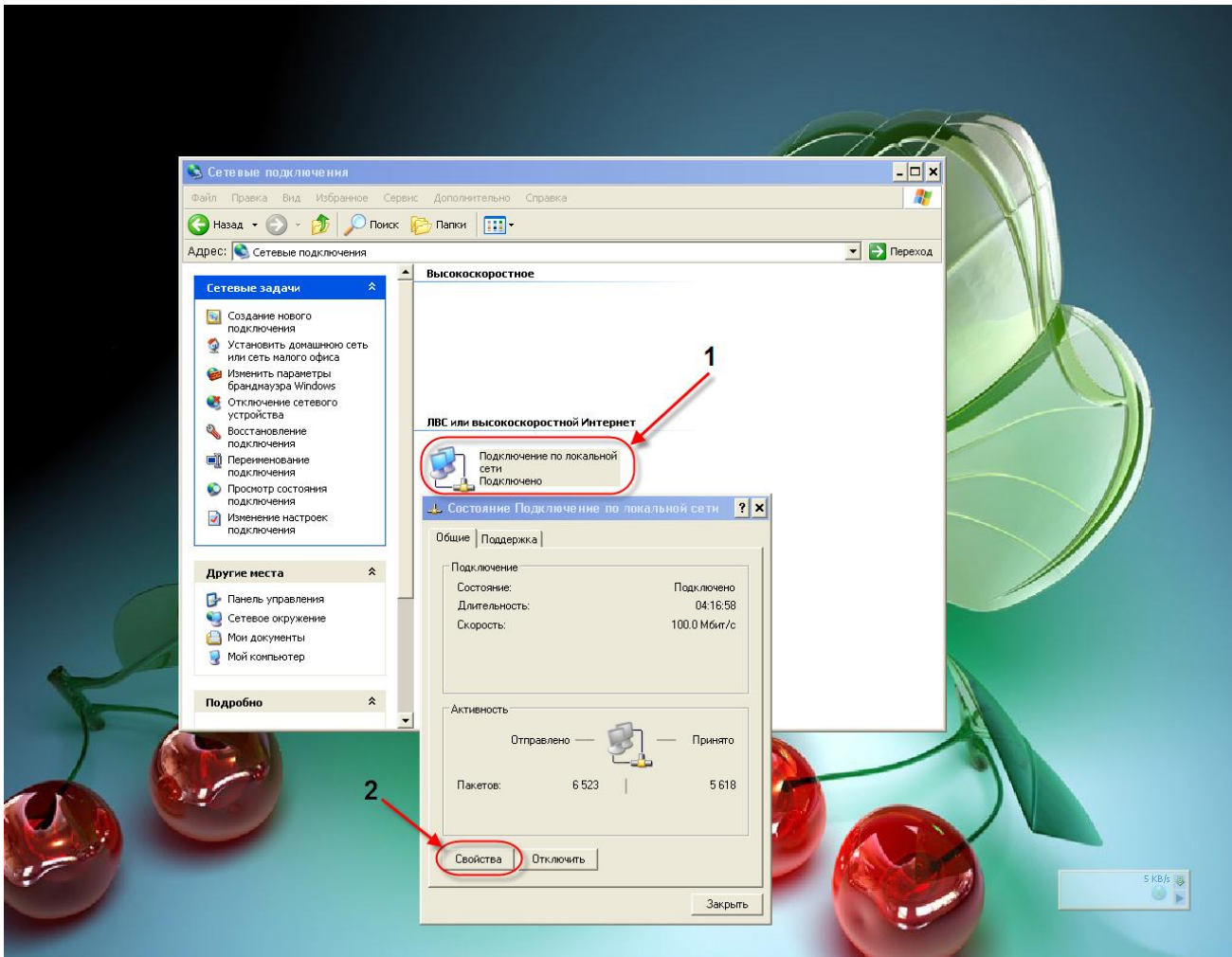


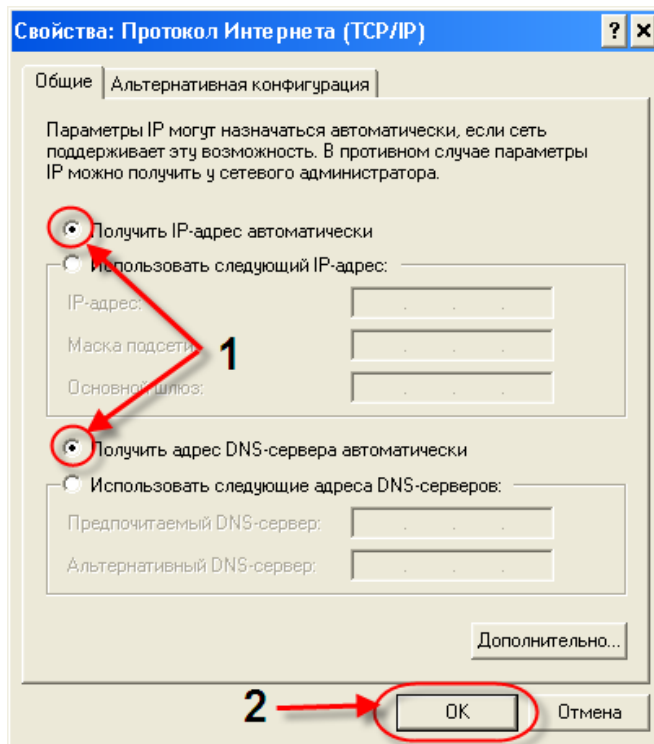
Инструкция

по настройке ADSL-модемов
ADE 3400-4400 v4, ADW 4401 v5
в режиме Router

Обзор меню настроек в ROUTER для пользователей модемов - маршрутизаторов (роутеров) Planet ADE 4400A(V4), ADW 4401(V5), ADE 3400(V4).

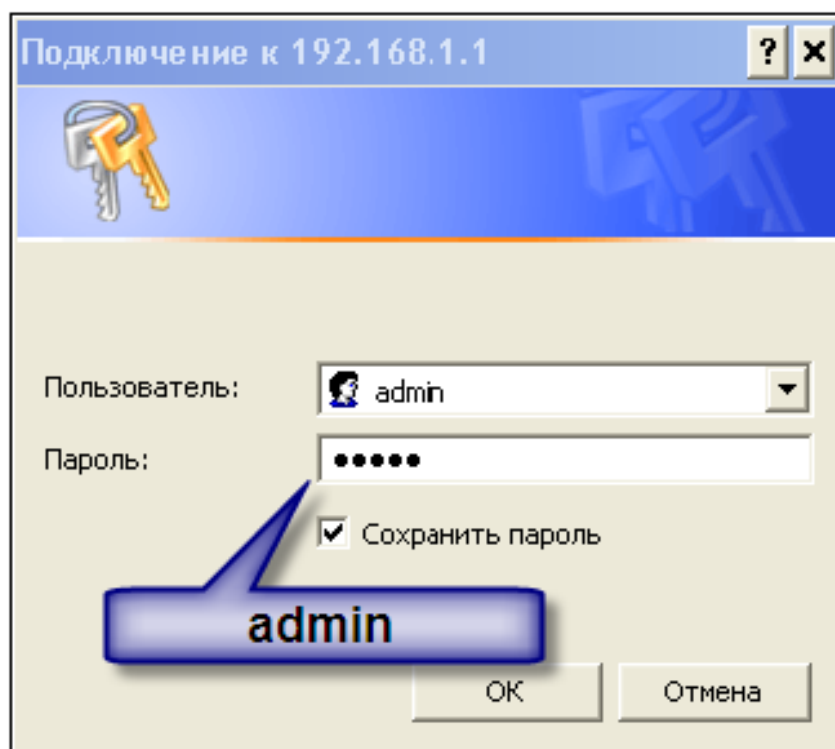
Нажмите кнопку «Пуск». Выберите пункт меню «Настройка» - «Панель управления» - «Сетевое подключение» - «Подключение по локальной сети». В появившемся окне нажмите кнопку «Свойства».



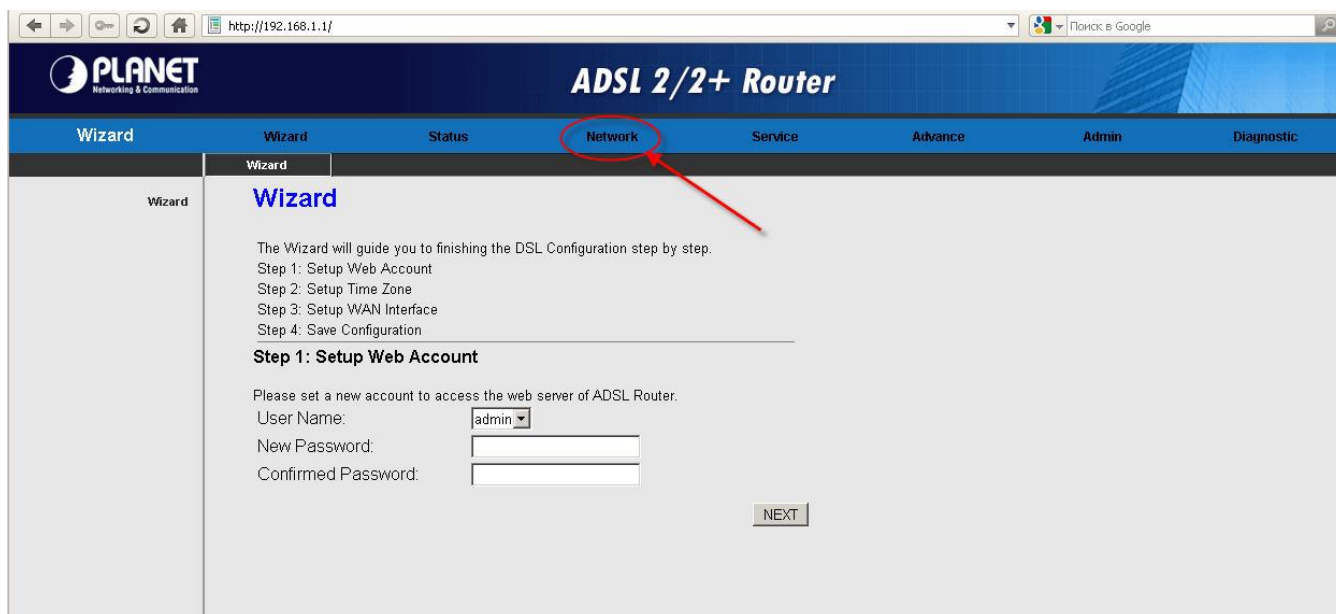


Поскольку устройство является WEB управляемым, то для начала настройки Вам необходимо открыть браузер (IE, Opera, Firefox) и подключиться к устройству.

(IP-адрес по умолчанию – 192.168.1.1, логин admin, пароль тоже admin).



Далее Вы попадаете на первую закладку WIZARD, где находятся страницы основных настроек роутера ADE-4400A (V4), ADE-3400A (V4), ADW-4401A (V5).



PLANET Networking & Communication

ADSL 2/2+ Router

Wizard Wizard Status **Network** Service Advance Admin Diagnostic

Wizard

Wizard

The Wizard will guide you to finishing the DSL Configuration step by step.

- Step 1: Setup Web Account
- Step 2: Setup Time Zone
- Step 3: Setup WAN Interface
- Step 4: Save Configuration

Step 1: Setup Web Account

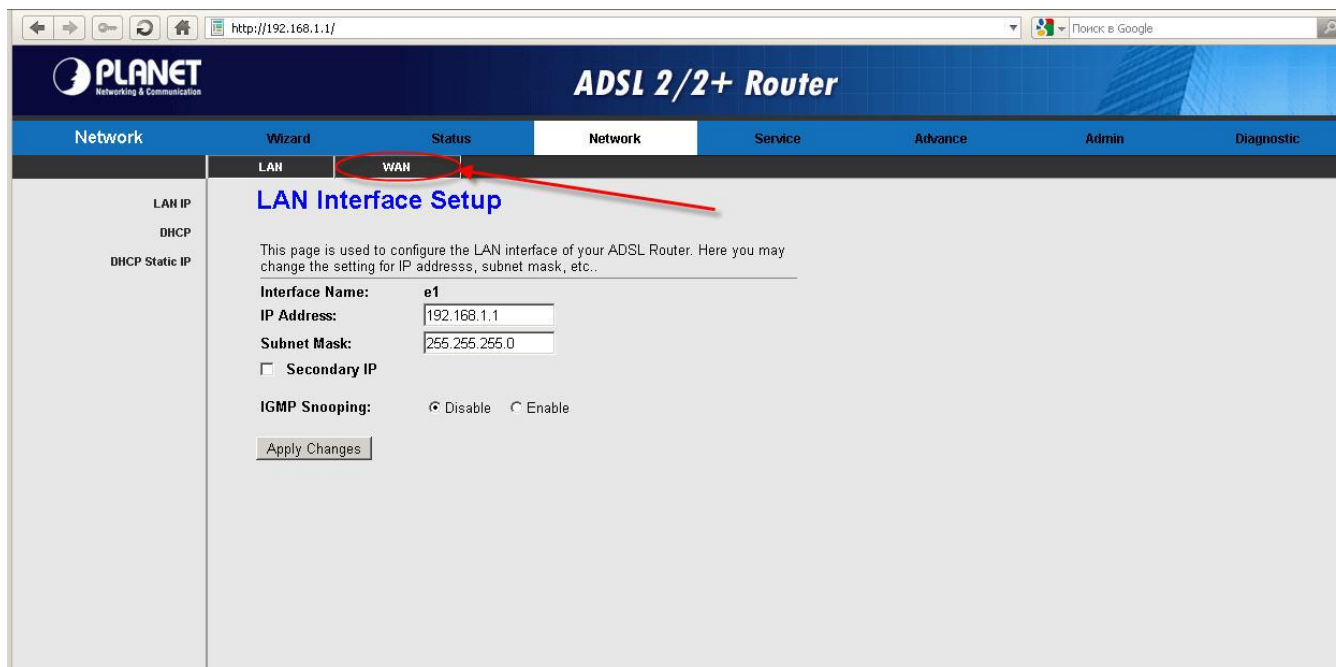
Please set a new account to access the web server of ADSL Router.

User Name:

New Password:

Confirmed Password:

Переходим на вкладку WAN



PLANET Networking & Communication

ADSL 2/2+ Router

Network Wizard Status **Network** Service Advance Admin Diagnostic

LAN IP
DHCP
DHCP Static IP

LAN Interface Setup

This page is used to configure the LAN interface of your ADSL Router. Here you may change the setting for IP address, subnet mask, etc..

Interface Name:

IP Address:

Subnet Mask:

Secondary IP

IGMP Snooping: Disable Enable

http://192.168.1.1/ Поиск в Google

PLANET Networking & Communication

ADSL 2/2+ Router

WAN Wizard Status **Network** Service Advance Admin Diagnostic

WAN
ATM Setting
ADSL Setting

Channel Configuration

This page is used to configure the parameters for the channel operation modes of your ADSL Modem/ Router. Note : When connect type of PPPoE and PPPoA only is "Manual", the "Connect" and "Disconnect" button will be enable.

Default Route Selection: Auto Specified

VPI: 0 VCI: 35 Encapsulation: LLC VC-Mux

Channel Mode: PPPoE Enable NAPT:

Enable IGMP:

PPP Settings: User Name: guest Password: *****

Type: Continuous Idle Time (min):

WAN IP Settings: Type: Fixed IP DHCP

Local IP Address: Remote IP Address:

Netmask:

Default Route: Disable Enable Auto

Unnumbered

Connect Disconnect **Add** Modify Delete Undo Refresh

Current ATM VC Table:

| Select | Inf | Mode | VPI | VCI | Encap | NAPT | IGMP | DRoute | IP Addr | Remote IP | NetMask | User Name | Unnumber | Status | Edit |
|--------------------------|--------|-------|-----|-----|-------|------|------|--------|---------|-----------|-----------------|-----------|----------|--------|------|
| <input type="checkbox"/> | pppoe1 | PPPoE | 0 | 35 | LLC | On | Off | On | 0.0.0.0 | 0.0.0.0 | 255.255.255.255 | guest | --- | down | |

1 2 3

Для уточнения настроек PVC необходимо позвонить по тел. 198

Логин и пароль выданный провайдером.

http://192.168.1.1/ Поиск в Google

PLANET Networking & Communication

ADSL 2/2+ Router

WAN Wizard Status **Network** Service Advance Admin Diagnostic

WAN
ATM Setting
ADSL Setting

Channel Configuration

This page is used to configure the parameters for the channel operation modes of your ADSL Modem/ Router. Note : When connect type of PPPoE and PPPoA only is "Manual", the "Connect" and "Disconnect" button will be enable.

Default Route Selection: Auto Specified

VPI: 0 VCI: Encapsulation: LLC VC-Mux

Channel Mode: 1483 Bridged Enable NAPT:

Enable IGMP:

PPP Settings: User Name: Password:

Type: Continuous Idle Time (min):

WAN IP Settings: Type: Fixed IP DHCP

Local IP Address: Remote IP Address:

Netmask:

Default Route: Disable Enable Auto

Unnumbered

Connect Disconnect Add Modify Delete Undo Refresh

Current ATM VC Table:

| Select | Inf | Mode | VPI | VCI | Encap | NAPT | IGMP | DRoute | IP Addr | Remote IP | NetMask | User Name | Unnumber | Status | Edit |
|-------------------------------------|--------|-------|-----|-----|-------|------|------|--------|---------|-----------|-----------------|-----------|----------|--------|------|
| <input checked="" type="checkbox"/> | pppoe1 | PPPoE | 0 | 35 | LLC | On | Off | On | 0.0.0.0 | 0.0.0.0 | 255.255.255.255 | guest | --- | down | |

Attention
Config is modified. **save** to make it effective forever!

Модем готов к работе в режиме ROUTER.

Приятной работы 😊